

Notice is hereby given according to State Statutes that the PUBLIC WORKS AND UTILITIES ADVISORY COMMITTEE of the Village of Hobart will meet on Monday May 9th 2022, at 6:00 P.M. at the Hobart Village Office. NOTICE OF POSTING: Posted this 6th day of May 2022 at the Hobart Village Office, 2990 S. Pine Tree Rd and on the village's website.

MEETING NOTICE – PUBLIC WORKS AND UTILITIES ADVISORY COMMITTEE

Date/Time: Monday May 9th 2022 (6:00 P.M.)

Location: Village Office, 2990 South Pine Tree Road

ROUTINE ITEMS TO BE ACTED UPON:

1. Call to order/Roll Call
2. Certification of the open meeting law agenda requirements and approval of the agenda
3. Election of Chairman and Vice Chairman
4. Approval of Minutes – March 14th 2022 Meeting (Page 2)

ACTION ITEMS

5.UPDATE - Village Board Ordinance to amend Municipal Code for duties of the Public Works and Utilities Advisory Committee

6.DISSCUSSION AND ACTION – Review and comment on Letter from Clean Water on Coal Tar Asphalt Sealants

7.DISSCUSSION AND ACTION – Drainage concern, options, and cost at 1074 Riverdale Drive.

8. DISCUSSION AND ACTION – Drainage concern, options, and cost on Ponce De Leon / Joan Leffew

9. DISCUSSION AND ACTION - Drainage concern, options, and cost on 1007 Heyerdahl Heights

10. DISCUSSION AND ACTION - Drainage concern, options, and cost on Larkspur Lane

11. DISCUSSION AND ACTION - Speed and traffic concerns on S. Pinetree Rd.

The Village has a request to consider a reduction on speed limit from current 45 mph to 35 mph with a recommendation to Village Board for final consideration.

12. DISCUSSION AND ACTION – Converting Old Fire Department Tender into Flatbed Truck for Public Works

Staff will present the latest information on this proposal, and seek comments from the Committee

13. UPDATE – Director and Activity Reports

The activity report agenda item allows Village Staff to apprise the Committee and Public of any new or time-sensitive information. Activity Reports may be given verbally and/or in writing.

14. ADJOURNMENT

Aaron Kramer, Village Administrator

MEMBERS: Vanya Koepke (Village Board), Dave Dillenburg (Village Board), Dave Baranczyk, Dan Deruyter, Richard Happel, Don Dahlstrom, David Smith, Kevin Gannon (Alternate)

NOTE: Page numbers refer to the meeting packet. All agenda and minutes of Village meetings are online: www.hobart-wi.org. Any person wishing to attend, who, because of disability requires special accommodations, should contact the Village Clerk-Treasurer at 920-869-1011 with as much advanced notice as possible. There may be a quorum of the Village Board of Trustees in attendance at this meeting, although no official Board action or discussion will take place.



Village of Hobart Public Works & Utilities Advisory Committee Minutes
Hobart Village Office; 2990 S. Pine Tree Rd, Hobart, WI
Monday, March 14, 2022 – 6:00 pm

1. Call to Order, Roll Call:

The meeting was called to order by Ed Kazik at 6:01pm. Roll call: Ed Kazik, Aye; Dave Dillenburg, aye; Dave Baranczyk, aye; David Smith, aye; Don Dahlstrom, aye; Kevin Gannon, aye; Dan Deruyter aye, Richard Happel arrived at 6:11

2. Verify/Modify/Approve Agenda:

Motion by Ed Kazik, seconded by Don Dahlstrom, to approve the agenda as presented. All in favor. Motion carried.

3. Approval of Minutes:

Motion by Dave Baranczyk, seconded by Ed Kazik, to approve December 13th, 2021, minutes as presented. All in favor, Motion carried.

4. Review Costs, equipment, and crew time for curbside pickup with yard waste (leaves):

Updated costs and time were presented to the committee, discussion was had on the time constraints with the current crew, need to purchase additional equipment, and possible options. Committee requested more information on options on working with outside contractors and additional cost analysis. Motion by Dave Dillenburg, seconded by Don Dahlstrom, to table this item until next meeting. All in favor, Motion carried.

5. Review and comment on letter from Clean Water on Coal Tar Asphalt:

Discussion on the letter and brochure resulted in the committee undecided if any action by the Village was necessary. The committee was unsure that Coal Tar products was used by any area contractors or readily available. Committee member Kevin Gannon will reach out to state associations and request their input on this subject. Kevin will return with the information at the next committee meeting. Motion by Dave Dillenburg, seconded by Don Dahlstrom, to table this item until next meeting. All in favor, Motion carried.

6. Continued review of DPW work categories to project future equipment, staffing levels and possible outsourcing required for current and expected growth of Public Works:

No action taken.

7. Converting old fire department Tender into a flatbed for Public Works:

PWD Lancelle presented Pro's and Con's with cost estimates to convert retired Tender into a flatbed for Public Works to assist in hauling yard waste and performing pre-treatment and anti-icing operations. Committee was in favor of moving forward with the plan. PWD Lancelle will solicit additional estimates on the flatbed, undercoating the chassis and reviewing any mechanical needs with the mechanic and return with the information at the next meeting. Motion by Don Dahlstrom, seconded by Dave Dillenburg, to table this item until next meeting. All in favor, Motion carried.

8. Proposed NEW Water Capitol Facility Improvements Plan:

PWD Lancelle presented the committee with a brief PowerPoint and overview of the proposed facility plan NEW Water has completed for the long-term upgrades at the Green Bay and DePere facilities. Brief discussion was held on the plan and the committee was informed that NEW Water will be presenting the plan to the Village Board a date yet to be determined, PWD Lancelle will send out an invite to the committee for that presentation. No action taken.

9. Director and Activity Reports:

PWD Lancelle gave updates on various ongoing Village projects and current operations within the Public Works and upcoming Storm Water issues the committee will be asked to review.

10. Adjourn:

Motion by Dave Dillenburg, seconded by Don Dahlstrom, to adjourn. All in favor. Motion carried. Meeting adjourned at 7:58pm.

ORDINANCE 2022-07

AN ORDINANCE TO AMEND THE MUNICIPAL CODE OF THE VILLAGE OF HOBART, SPECIFICALLY SECTION 10 (BOARDS, COMMISSIONS AND COMMITTEES) OF CHAPTER 5 (ADMINISTRATION OF GOVERNMENT; ORGANIZATION OF VILLAGE)

Purpose: The purpose of this Ordinance is to provide a more clearly defined role for each board, committee, and commission (unless already specified in state statute).

The Village Board of the Village of Hobart, Brown County, Wisconsin, does ordain as follows:

Section 1: Section 5 (Boards, Commissions and Committees) of Chapter 5 (Administration of Government; Organization of Village) of the Code of the Village of Hobart, is hereby amended to read as follows:

§ 5.10. Boards, commissions and committees.

A. Definitions. As used in this section, the following terms shall have the meanings indicated:

BOARD. A permanent body of the Village whose members are officially appointed and empowered to exercise designated governmental functions. When used in this section, the term "board" shall not include the Village Board.

COMMISSION. A board.

COMMITTEE. An official body of the Village to which has been delegated particular duties which are to be performed in the expectation that such acts will be confirmed by the Village Board, or that its recommendations and advice will be of aid and assistance to the Village Board in determining what acts and functions the Village should perform.

B. Creation. The following boards, commissions and committees are created to perform such duties as required by the Wisconsin Statutes, rules and regulations and the Village ordinances, and as determined via Village Board resolution as may be amended from time to time:

- (1) Planning and Zoning Commission.
- (2) Board of Appeals.
- (3) Board of Review.
- (4) Board of Police Commissioners.
- (5) Board of Fire Commissioners.
- (6) Public Works and Utilities Advisory Committee.
- (7) Site Review Committee.

(8) Ethics Committee.

(9) Park and Recreation Committee.

C. Appointments. Unless otherwise required by Wisconsin Statutes, and/or specifically denoted in the appointments sections of each board, commission or committee below, members of such boards, commissions and committees shall be appointed to regular terms by the Village President, subject to confirmation by the Village Board at a meeting held after the spring election and prior to May 1 of the calendar year in which the term is to begin. Regular terms shall commence on May 1 and end April 30, and be of such length as hereinafter provided. In the event of a vacancy during a term on a board, commission or committee which does not have an appointed alternate member, an appointment for the remainder of the term shall be made by the Village President, subject to confirmation by the Village Board. In the event of a vacancy during a term on a board, commission or committee having an appointed alternate, that alternate member shall take the place of the vacating regular member, if he or she so accepts, and the Village shall seek to appoint another alternate member in the same manner prescribed above. All appointments shall take into consideration the qualifications for members of the specific board, commission, or committee as established by the Village Board from time to time. All members of boards, commissions, and committees shall serve at the pleasure of the Village Board unless otherwise provided by Wisconsin Statutes.

(1) Upon the conclusion of a member's term to a board, commission or committee, the Village President may have the option of reappointing said member, with approval by the Village Board, subject to confirmation by the Village Board at a meeting held after the spring election and prior to May 1 of the calendar year in which the term is to begin, or, if the Village President elects to appoint another individual to the position, or the current member does not seek to continue serving, the Village President shall make such an appointment, subject to confirmation by the Village Board at a meeting held after the spring election and prior to May 1 of the calendar year in which the term is to begin.

(2) In the event a Board member is unable to discharge his or her duties, on a temporary basis, on a commission or committee as prescribed in this section, the Board President shall appoint, with Board approval, another member of the Village Board to fill the temporary vacancy. Said appointment shall not exceed three months in length. At that time, the Board President must receive Board approval to refill the vacancy.

D. Boards/commissions.

(1) Planning and Zoning Commission.

(a) Composition. The Planning and Zoning Commission shall consist of seven regular members ("Commissioners"), one of whom is the Village President and one of whom is another Village Board member. The Village President shall serve as the Commission's presiding officer, and the Village President and Village Board member shall serve as full voting Commissioners. The Commission shall always have at least three citizen Commissioners who are not Village officials.

(b) Appointments. All members of the Commission shall be appointed by the Village President to three-year terms, except those initial appointments shall be as follows: three-year terms, three two-year terms, and one one-year term. Appointments to the Commission do not require Village Board confirmation. Appointments shall be made during the month of April for terms that expire in April or at any other time if a vacancy occurs during the middle of a term.

(c) Quorum. A majority of the Planning and Zoning Commissioners (four) shall constitute a quorum. If there is not a quorum present, the fact shall be entered on the journal, and the Commission may adjourn. At least four members of the Commission must vote on all matters,

exclusive of abstentions; a majority vote of all members electing to vote shall be necessary for passage or approval of any matter before the Commission.

(d) Duties. The Village Planning and Zoning Commission shall be the authorizing planning agency and shall perform the duties of the Village Planning and Zoning Commission as set forth in § 62.23 of the Wisconsin State Statutes and § 295-335 (Village Planning and Zoning Commission) of Article XXXI (Administration and Enforcement) of Chapter 295 (Zoning), and any other applicable section of the Municipal Code of the Village of Hobart.

(2) Board of Appeals.

(a) Composition. The Board of Appeals shall consist of five regular members and two alternate members. No member of the Village Board shall be a member of the Board of Appeals.

(b) Appointments. All regular members of the Board of Appeals shall be appointed by the Village President, subject to the confirmation of a majority vote of the Village Board, to three-year terms, except those initial appointments shall be as follows: two three-year terms, two two-year terms, and one one-year term.

(c) Quorum. A majority of the regular members of the Board of Appeals (three) shall constitute a quorum. If there is not a quorum present, the fact shall be entered on the journal, and the Board may adjourn.

(d) Alternate members. Alternate members shall serve for staggered three-year terms. Annually, the Village President, not subject to a majority vote of the Village Board, shall designate the first alternate member and the second alternate. The first alternate shall act, with full power, only when a member of the Board refuses to vote because of interest or when a member is absent. The second alternate shall so act only when the first alternate so refuses or is absent or when more than one member of the Board so refuses or is absent.

(d) Duties. The Board of Appeals shall perform the duties as set forth in § 295-334 (Board of Appeals) of Article XXXI (Administration and Enforcement) of Chapter 295 (Zoning), and any other applicable section of the Municipal Code of the Village of Hobart.

(3) Board of Review.

(a) Composition. The Board of Review shall consist of five regular members and the Clerk-Treasurer, who shall be a nonvoting member and act as Secretary to the Board.

(b) Appointments. All regular members of the Board of Review shall be appointed by the Village President, subject to the confirmation of a majority vote of the Village Board, to five-year terms, except those initial appointments shall be as follows: two three-year terms, two two-year terms and one one-year term.

(c) Quorum. A majority of the regular members of the Board of Review (three) shall constitute a quorum. If there is not a quorum present, the fact shall be entered on the journal, and the Board may adjourn.

(d) Duties. The Board of Review shall perform the duties as set forth in in § 70.46 (Boards of review; members; organization) and § 70.47 (Board of review proceedings) of the Wisconsin State Statutes.

(4) Board of Police Commissioners.

(a) Composition. The Board of Police Commissioners shall be constituted in accordance with Wisconsin Statutes, including § 61.65, Wis. Stats., but none of the specified "optional powers of Board" are extended to the Board of Police Commissioners. The Board shall consist of five members, at least three of whom are residents of the Village of Hobart, and none of whom shall hold any other public office in the Village of Hobart, or in any other municipality.

(b) Appointments. All regular members of the Board of Police Commissioners shall be appointed by the Village President, subject to the confirmation of a majority vote of the Village Board, to five-year terms, except those initial appointments shall be as follows: one five-year term, one four-year term, one three-year term, one two-year term, and one one-year term.

(c) Quorum. A majority of the members of the Board of Police Commissioners (three) shall constitute a quorum. If there is not a quorum present, the fact shall be entered on the journal, and the Board may adjourn.

(d) Duties. The Board of Police Commissioners shall perform the duties as set forth in § 61.65, Wis. Stats., but none of the specified "optional powers of Board" are extended to the Board of Police Commissioners.

(5) Board of Fire Commissioners.

(a) Composition. The Board of Fire Commissioners shall be constituted in accordance with Wisconsin Statutes, including § 61.65, Wis. Stats., but none of the specified "optional powers of Board" are extended to the Board of Fire Commissioners. The Board shall consist of five members, none of whom shall hold any other public office in the Village of Hobart, or in any other municipality.

(b) Appointments. All regular members of the Board of Commissioners shall be appointed by the Village President, subject to the confirmation of a majority vote of the Village Board, to five-year terms, except those initial appointments shall be as follows: one five-year term, one four-year term, one three-year term, one two-year term, and one one-year term.

(c) Quorum. A majority of the members of the Board of Fire Commissioners (three) shall constitute a quorum. If there is not a quorum present, the fact shall be entered on the journal, and the Board may adjourn.

(d) Duties. The Board of Fire Commissioners shall perform the duties as set forth in § 61.65, Wis. Stats., but none of the specified "optional powers of Board" are extended to the Board of Fire Commissioners.

E. Committees.

(1) Public Works and Utilities Advisory Committee.

(a) Composition. The Public Works and Utilities Advisory Committee shall consist of seven regular members, two of whom shall be Village Board members, and one alternate member. Village Board members shall serve as full voting members. All regular members shall be residents of the Village.

(b) Appointments. In accordance with Subsection C of this section, members shall be appointed to three-year terms, except those initial appointments shall be as follows: three three-year terms, three two-year terms, and two one-year terms.

(c) Quorum. A majority of the regular members of the Committee (four) shall constitute a quorum. If there is not a quorum present, the fact shall be entered on the journal, and the Committee may adjourn.

(d) Alternate member. The alternate member shall attend and participate in all Committee meetings, but shall only act with full voting authority when a regular member of the Committee refuses to vote because of interest or when a regular member is absent.

(e) Duties. It shall be the duty and responsibility of the Committee to act in an advisory and volunteer capacity to the Village Board. In their capacity, the Public Works and Utilities Committee duties shall be to:

1. Review and make recommendations to the Village Board any requests to change speed limits on Village roads.
2. Review and make recommendations on the full-time and seasonal staffing levels and responsibilities and duties of the Public Works Department.
3. Review and make recommendations on the Village's Capital planning relative to the Village's infrastructure and Public Works Department equipment needs
4. Review and make recommendations to the Village Board in any other matters as prescribed in the Municipal Code
5. Review and make recommendations to the Village Board in any other matters as assigned to them by the Village Board.

(2) Site Review Committee.

(a) Composition. The Site Review Committee shall consist of seven regular members, two of whom shall be Village Board members, and one alternate member. Village Board members shall serve as full voting members. All regular members shall be residents of the Village.

(b) Appointments. In accordance with Subsection C of this section, members shall be appointed to three-year terms, except those initial appointments shall be as follows: three three-year terms, three two-year terms, and two one-year terms.

(c) Quorum. A majority of the regular members of the Site Review Committee (four) shall constitute a quorum. If there is not a quorum present, the fact shall be entered on the journal, and the Committee may adjourn.

(d) Alternate member. The alternate member shall attend and participate in all Committee meetings, but shall only act with full voting authority when a regular member refuses to vote because of interest or when a regular member is absent.

(e) Duties. The Site Review Committee shall perform the duties as set forth in Article XXXII (Site Review/Development and Design Standards) of Chapter 295 (Zoning).

(3) Ethics Committee.

(a) Composition. The Ethics Committee shall consist of five regular members. None of the members shall hold any other public office in the Village. All members shall be residents of the Village.

(b) Appointments. In accordance with Subsection C of this section, members shall be appointed to three-year terms, except those initial appointments shall be as follows: two three-year terms, two two-year terms, and one one-year term.

(c) Quorum. A majority of the regular members of the Ethics Committee (three) shall constitute a quorum. If there is not a quorum present, the fact shall be entered on the journal, and the Committee may adjourn.

(d) Duties. The Ethics Committee shall investigate alleged violations of the Village of Hobart Ethics Code or of any applicable rules, laws, or regulations governing the performance of official duties or the discharge of official responsibilities, and recommend administrative actions to establish or enforce the Village of Hobart Ethics Code.

(4) Park and Recreation Committee.

(a) Composition. The Park and Recreation Committee shall consist of five members and one alternate member. All regular members shall be residents of the Village.

(b) Appointments. In accordance with Subsection C of this section, members shall be appointed to three-year terms, except those initial appointments shall be as follows: two three-year terms, two two-year terms, and one one-year terms. The alternate member shall be initially appointed to a one-year term.

(c) Quorum. A majority of the regular members of the Committee (three) shall constitute a quorum. If there is not a quorum present, the fact shall be entered on the journal, and the Committee may adjourn.

(d) Alternate member. The alternate member shall attend and participate in all Committee meetings, but shall only act with full voting authority when a regular member refuses to vote because of interest or when a regular member is absent.

(e) Duties. It shall be the duty and responsibility of the Parks and Recreation Committee to act in an advisory and volunteer capacity to guide the development of parks and recreation opportunities in the Village of Hobart. In their capacity, the Parks and Recreation Committee duties shall be to:

1. Encourage public recreational activities and the use of parks in the Village.
2. Recommend projects, legislation, policies, rules, regulations, funding allocations, and other measures, programs, or activities for the development of park and recreation opportunities in the Village.
3. Recommend projects, legislation, policies, rules, regulations, funding allocations, and other measures, programs, or activities for the development of the forestry program in the Village.
4. Recommend projects, legislation, policies, rules, regulations, funding allocations, and other measures, programs, or activities for the development of pedestrian bicycle and walking opportunities in the Village.
5. Act in an advisory capacity to the Village Board and Public Works Director in all matters pertaining to Village parks and recreation.

6. Initiate, sponsor, and promote involvement, activities, and contributions by the private sector for the development of parks and recreational activities in the Village.

7. Assist in the planning of recreation programs for the inhabitants of the Village, promote and stimulate public interest therein, and solicit the cooperation of school authorities and other public and private agencies interested therein.

(5) Other advisory or ad hoc committees. The Village Board may, via resolution approved by a majority of the Village Board, create such other advisory or ad hoc committees, for such period of time, for such purposes, and of such size, as it shall determine from time to time. Any appointments to such committees shall be made by the Village President, subject to confirmation of the Board.

F. Miscellaneous.

(1) Unless otherwise provided herein, or as required by Wisconsin Statutes, each Board, Commission and Committee shall annually elect its Chairperson, Vice Chairperson, and, if applicable, Secretary, at its first regular meeting held after April 30.

(2) Notice of all meetings shall comply with the notice and other requirements of the Wisconsin Open Meeting Law.

(3) Any board, commission or committee may request any Village officer to confer with it and supply information needed in connection with any matter pending before it. Every such request shall be in writing furnished to the appropriate officer, with a copy to the Clerk-Treasurer, at least 72 hours before the expected return or meeting date.

(4) This Charter Ordinance was first established in 2002. Subsequent amendment history is as follows: 2013: §§ 5-2, 5-3, 5-9 and 5-10.

Section 6: Any Ordinance or parts thereof, inconsistent herewith are hereby repealed.

Section 7. This Ordinance shall be published as required by law after passage by the Village Board.

Passed and approved this 17th day of May, 2022.

Richard Heidel, Village President

Attest:

Aaron Kramer, Village Administrator

I, Erica Berger, am the duly qualified and acting Village Clerk of the Village of Hobart, Brown County, Wisconsin. I hereby certify that the aforementioned is a true and exact reproduction of the original ordinance or resolution adopted by the Village Board.

IN WITNESS WHEREOF, I have executed this Certificate in my official capacity on May 17th 2022.

(Seal)



Clean Water Action Council of Northeast Wisconsin

P.O. Box 9144, Green Bay, WI 54308
www.cleanwateractioncouncil.org
contact@cleanwateractioncouncil.org
Office: A307 MAC Hall, UWGB, 920-421-8885

February 10, 2022

Rich Heidel, Village of Hobart President
2990 S. Pine Tree Road
Hobart, WI 54155

Dear Mr. Heidel,

Clean Water Action Council of Northeast Wisconsin is educating the public about the hazards of coal tar pavement sealants containing the carcinogen, polycyclic aromatic hydrocarbons, or PAHs. We helped residents in area communities, such as Sturgeon Bay and Green Bay, to successfully encourage elected officials to pass a ban on these sealants. Many additional lakeshore communities have banned the product since the list on the enclosed handout was created, including Manitowoc and Sheboygan.

The enclosed handout gives additional information about why a ban is needed. Unfortunately, the state legislature has failed to act again after Wisconsin Assemblyman Joel Kitchens introduced a bill for the second time last year. Towns and villages will need to act if residents, especially children, are to be protected from this dangerous and unnecessary exposure. One coal tar pavement applicator testified at last year's hearing that he "applies it on school playgrounds and has had no complaints." Yet the U.S. Geological Survey reports that children living in homes next to parking lots where this sealant is used face a 14-fold increase in cancer risk.

The American Medical Association has "RESOLVED that our American Medical Association advocate for national legislation to ban the use of pavement sealcoats that contain polycyclic aromatic hydrocarbons." The Children's Hospital of Wisconsin states, "PAH's create a significant concern for children's health and well-being."

Besides risks to human health, PAHs kill small organisms living in stream and riverbeds and can cause tumors in larger aquatic animals. When PAHs end up in waterways including storm water sediment ponds, it can be an expensive cleanup sometimes costing millions of dollars.

The good news is that there are cost effective alternatives such as asphalt-based or acrylic sealants. These alternatives have been used in Minnesota, Dane County, Wisconsin, and other municipalities. As one public works director stated to his city council, "this is a no-brainer" when recommending that the city pass a ban on coal tar-based sealants.

Please know that we could do a 10-minute presentation to your city, village, or town officials, or to a designated committee. We have numerous Wisconsin ordinance examples and additional literature we can share with you. I encourage you to contact us to further discuss this concern, answer your questions, and schedule a presentation.

Dean Hoegger

A handwritten signature in cursive script that reads "Dean Hoegger".

CWAC President and Executive Director
Direct phone number: 920-495-5127

DANGEROUS DRIVEWAYS TOXIC PAH POLLUTION FROM TAR-BASED SEALANTS



CHILDREN LIVING FROM BIRTH TO
AGE 6 NEAR PARKING LOTS WITH
TAR-BASED SEALANTS HAVE A
**14x HIGHER LIFETIME
CANCER RISK**

Tar-based pavement sealants are the primary source of toxic PAH pollution in urban landscapes. Those PAHs are harmful to human health and hurt fish and other aquatic life in our lakes and rivers.

What are pavement sealants?

Pavement sealants, also known as “sealcoats” or “sealers,” are the jet-black coatings homeowners and contractors apply to residential, commercial, and industrial driveways and parking lots. There are two main types of pavement sealants on the market today: tar-based sealants (also called “coal tar-based”), and asphalt-based sealants.

The problem with tar-based pavement sealants

Pavement sealants contain **polycyclic aromatic hydrocarbons** (PAHs), which are toxic compounds that can **cause cancer and developmental problems in children**. The American Medical Association and other public health groups have urged local and state governments to ban tar-based sealants due to their harmful health effects.

How are people exposed to PAHs from tar-based sealants?

PAHs accumulate in soils, household dust, and carpets when particles of tar-based sealants are blown or tracked into homes, schools, and other buildings. The particles come from those sealants being worn down over time by weather, tire abrasion, and foot traffic. The toxic sealant particles are also washed off by rain and spring meltwater, ending up in our local water bodies.

A recent study found that 77% of PAH pollution in Milwaukee streambeds came from tar-based sealants.

How significant is the health risk?

The coal tar pitch used in tar-based sealants is classified as a **hazardous waste**. Children living in homes where parking lots are coated with tar-based pavement sealants face a **14-fold increase in cancer risk** compared to those living next to unsealed lots, according to researchers at Baylor University and the U.S. Geological Survey. ***A lifetime of exposure can increase cancer risk by 38 times.***

Current Tar-Based Sealant Bans:
Ann Arbor, Michigan Annapolis/
Anne Arundel County, Maryland
Austin, Texas
Brown Deer, Wisconsin
Cwlth. of Massachusetts (use
restriction)
Dane County, Wisconsin
Dexter, Michigan
Elm Grove, Wisconsin
Franklin, Wisconsin
Glendale, Wisconsin
Greendale, Wisconsin
Greenfield, Wisconsin
Hales Corners, Wisconsin,
Milwaukee, Wisconsin
Montgomery County, Maryland
North Barrington, Illinois
Port Washington, Wisconsin
Prince George’s County, Maryland
San Antonio, Texas
Shorewood, Wisconsin
South Barrington, Illinois Spring
Lake Township, Michigan State of
Minnesota
State of Washington
Suffolk County, New York
Van Buren Township, Michigan
Washington, D.C.
Wauwatosa, Wisconsin
West Allis, Wisconsin Westwood,
Massachusetts Whitefish Bay,
Wisconsin Winnetka, Illinois
Ypsilanti, Michigan
... plus 28 others (and counting)



“Whether sending their children to a playground or repairing a driveway, Americans are potentially being exposed to harmful carcinogens in coal-tar-based sealcoats.”
– American Medical Assoc.

How to be PAH-safe:

Don't use tar-based pavement sealants

If you feel you must seal your driveway or parking lot, then use asphalt-based sealants, which have 1,000-times lower PAH levels.

Remove your shoes

If you don't have control over your parking lot or driveway, try to keep sealant dust and soil out of your home by taking off shoes before entering.

Look for hidden PAHs

Tar can have a lot of different names, and some other byproducts can have very high levels of PAHs. To be safe, check the “Material Safety Data Sheet” of the product (try searching online) and avoid anything including CAS #'s **64742-90-1, 65996-92-1, 65996-93-2, 65996-89-6, 69013-21-4, or 8007-45-2.**

Speak up

Become an advocate in your community against the use of tar-based pavement sealants. More at cleanwisconsin.org/our-work/pah.

Environmental impacts

PAHs *kill small organisms* living on the bottoms of rivers and streams and can **cause tumors in fish and other large aquatic animals**. This could result in costly impacts on the ecological balance of aquatic environments. Even three months or more after sealants are applied, the tar-sealed pavement runoff can kill fathead minnows and water fleas, two indicator species used to assess chemical toxicity to aquatic life.

Economic Impacts

PAH pollution from tar-based sealants can be a significant burden to taxpayers when municipalities are on the hook for cleaning up stormwater sediment ponds contaminated with PAH-laden sediment. In the Minneapolis metro area, the PAH cleanup from tar-based sealants is estimated to cost taxpayers hundreds of millions of dollars.

Are there alternatives?

Yes. Asphalt-based pavement sealants have up to 1,000-times lower PAH levels and are no more expensive than tar-based sealants. Alternatives such as acrylic sealants or gravel parking lots and driveways have minimal PAH levels. Studies of an early PAH ban in Austin, Texas, show significant PAH reductions in local waterbodies.

How do tar-based sealants compare to other PAH sources?

Other sources of environmental PAH pollution have significantly lower concentrations than tar-based sealants. Fresh asphalt, for example is about 1.5 parts per million (ppm) PAHs. Smoke from wood fires can range from 2 to 114 ppm, engine exhaust 102-370 ppm, and used motor oil around 440 ppm. **Tar-based sealants are hundreds to thousands of times worse**, at 50,000 – 100,000 ppm.

WE IN WISCONSIN NEED TO FOLLOW THE LEAD OF OTHERS AND END THE SALE AND USE OF HIGH-PAH SEALANTS TO PROTECT OUR HEALTH AND ENVIRONMENT.

Visit cleanwisconsin.org/our-work/pah for more information.

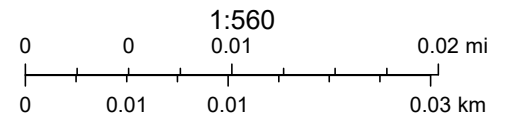
Dean Hoegger
President/Executive Director
Clean Water Action Council
contact@cleanwateractioncouncil.org
920-495-5127

1074 Riverdale

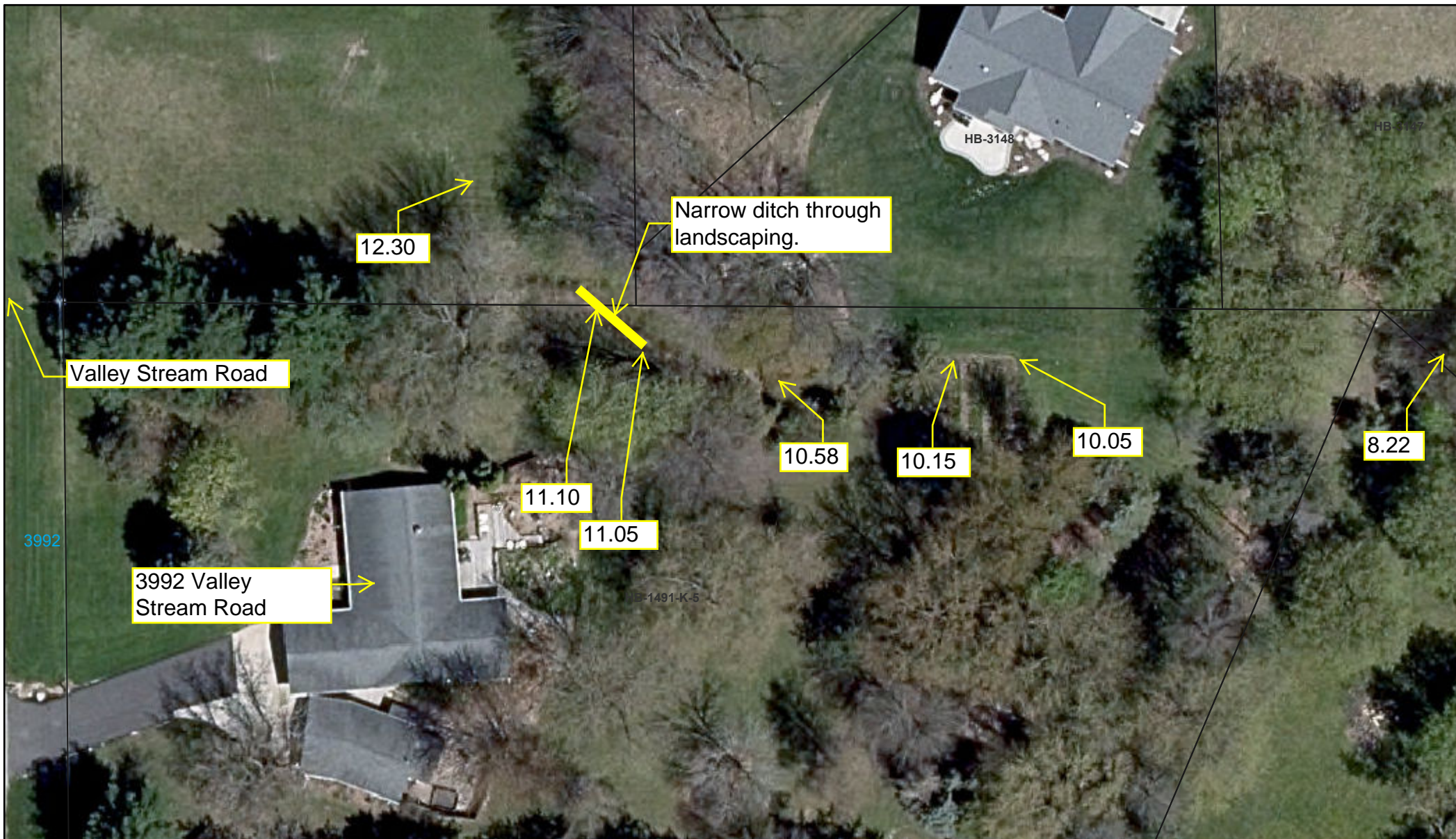


5/2/2022, 2:35:26 PM

Parcels



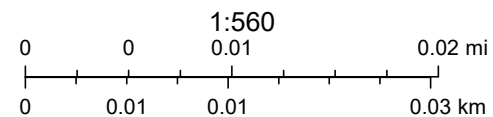
Utilities Combined



5/2/2022, 3:11:35 PM

Addresses

Parcels



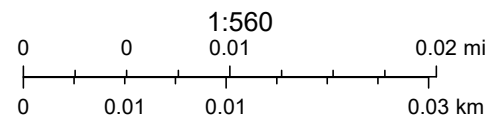
Utilities Combined



4/29/2022, 9:35:43 AM

Addresses

Parcels





2094 County Road QQ
 Green Bay, WI 54311
 Phone (920) 655-8079
 Fax (920) 468-7207
 Timpotts@northernpipegroup.com

Quote

Date	Quote #
5/3/2022	98

Village of Hobart
 2990 S. Pine Tree Road
 Hobart, WI 54155

Quote Good Thur	Payment Terms		Sales Rep		
6/1/2022	Net 30		TP		
Description	Unit of Measure	Quantity	U/M	Unit Price	Total
Storm Sewer Repairs					
Install Storm Sewer Catch Basin and Piping on Riverdale Drive. 350' of 6" HDPE DR11 1 - 4' x 30" Catch Basin with Casting	Lump Sum	1		18,500.00	18,500.00
Install Storm Sewer Catch Basin and Piping on Ponce De Leon Blvd. 120' of 6" HDPE DR11 1 - 4' x 30" Round Catch Basin.	Lump Sum	1		10,700.00	10,700.00
Sales Tax				5.50%	0.00

Please notify Directional Drilling Services, Inc within 30 days if the quotation is accepted and the above prices will be honored.

All material is guaranteed to be specified. All work to be completed in a workmanlike manner according to standard practices. Any alterations or deviation from above specifications involving extra cost will be executed only upon written orders and will become an extra charge over and above the estimate. All agreements contingent upon strikes, accidents, or delays beyond our control. Owner to carry fire, tornado, and other necessary insurance. Our workers are fully covered by workmen's compensation insurance.

Total \$29,200.00

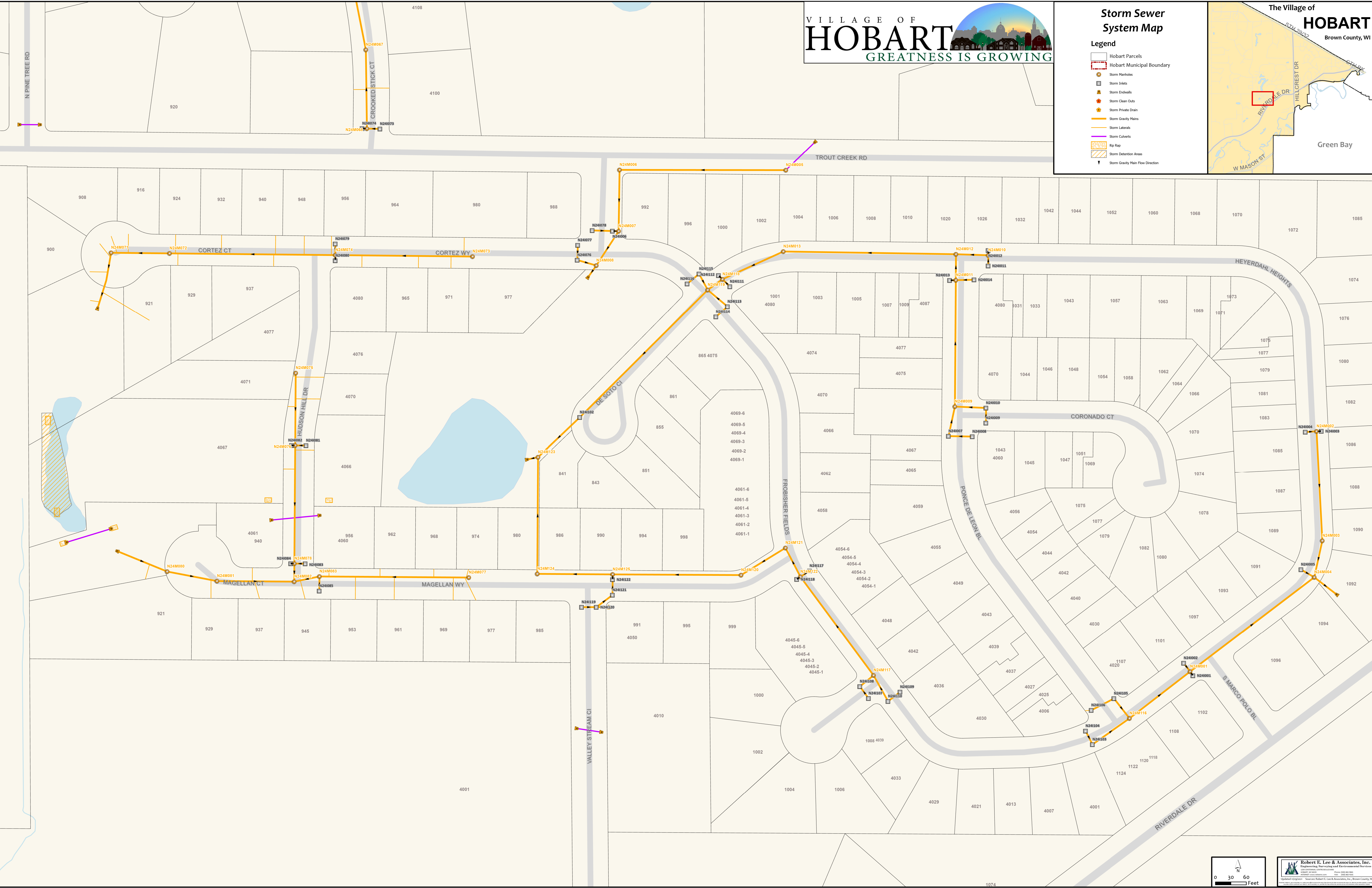
Storm Sewer System Map

Legend

- Hobart Parcels
- Hobart Municipal Boundary
- Storm Manholes
- Storm Inlets
- Storm Endwalls
- Storm Clean Outs
- Storm Private Drain
- Storm Gravity Mains
- Storm Laterals
- Storm Culverts
- Rip Rap
- Storm Detention Areas
- Storm Gravity Main Flow Direction

The Village of
HOBART
 Brown County, WI

Green Bay

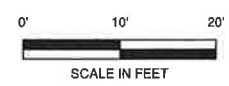


DESIGN 687.10

- ⊙ WATER MANHOLE
- ▽ REDUCER/INCREASER
- SANITARY MANHOLE
- AIR RELIEF MANHOLE
- ⊙ STORM MANHOLE
- ⊙ OPEN STORM MANHOLE
- ⊙ STORM INLET
- ⊙ STORM INLET MANHOLE
- ⊙ TANK COVER
- ⊙ SOIL BORING
- ⊙ POST
- IRON PIPE/ROD
- ▲ PK NAIL
- ⊙ LIGHT POLE
- ⊙ TRAFFIC SIGNAL POLE
- ⊙ ELECTRIC MANHOLE
- ⊙ ELECTRIC METER
- ⊙ TELEPHONE MANHOLE
- ⊙ TELEPHONE PEDESTAL
- ⊙ CABLE TV MANHOLE
- ⊙ CABLE TV PEDESTAL
- ⊙ GAS VALVE
- ⊙ GAS METER
- ⊙ MAILBOX
- ⊙ SIGN
- ⊙ BOLLARD
- ⊙ CONIFEROUS TREE
- ⊙ BUSH
- ⊙ RIP RAP
- ⊙ CULVERT
- ⊙ WETLANDS
- ⊙ HANDICAP PARKING

- 855 — SANITARY SEWER (SIZE NOTED)
- 4FM — FORCEMAIN (SIZE NOTED)
- 10ST — STORM SEWER (SIZE NOTED)
- 6W — 6W — WATERMAIN (SIZE NOTED)
- G — G — GAS LINE
- OT — OT — OVERHEAD TELEPHONE LINE
- T — T — UNDERGROUND TELEPHONE LINE
- OE — OE — OVERHEAD ELECTRIC LINE
- E — E — UNDERGROUND ELECTRIC LINE
- OTV — OTV — OVERHEAD CABLE TV LINE
- TV — TV — CABLE TV LINE
- FO — FO — FIBER OPTIC LINE
- R/W LINE
- PROPERTY LINE
- EASEMENT LINE
- BUILDING SETBACK LINE
- SECTION LINE

BENCHMARK		BENCHMARK ESTABLISHED BY: ROBERT E. LEE & ASSOCIATES, INC. FIELD VERIFY BENCHMARKS FOR ACCURACY.	
NO.	DESCRIPTION	EL.	
⚠	TAG BOLT ON HYDRANT AT SW CORNER OF INTERSECTION OF HEYERDAHL HEIGHTS AND PONCE DE LEON BLVD	692.21	
⚠	TAG BOLT ON HYDRANT AT SE CORNER OF INTERSECTION OF PONCE DE LEON BLVD AND CORONADO CT	695.98	



INV +/- 688.50
PONCE DE LEON BLVD

NEED TO CONFIRM STORM LOCATION / ELEVATION

Connect Downspouts TO ST PIPE - OPTIONAL
HB-3191

ST MH - OPEN CURB
Rim = 693.75
+/- INV = 690.50
D = 3.25'

GRADE TO DRAIN

SUGGESTED -10' UTILITY EASEMENT

120'-6" ST sewer @ 1.0%

HB-3186

HB-2249

HB-2248

DATE	APPROV.	REVISION	NO.	DATE	APPROV.	REVISION

DRAWN L.P.
CHECKED
DESIGNED J.S.

DRAINAGE STUDY
POLO POINT
VILLAGE OF HOBART
BROWN COUNTY, WISCONSIN

EXISTING SITE CONDITIONS

DATE 07/2021
FILE 220221T
JOB NO. 220221



Robert E. Lee & Associates, Inc.
ENGINEERING, SURVEYING, ENVIRONMENTAL SERVICES
1250 CENTENNIAL CENTRE BOULEVARD HOBART, WI 54155
920-662-9641 www.releinc.com

SHEET NO. 1

OPTION 1 - PIPE



A G EXCAVATING, INC.

1336 Russet Court, Green Bay, WI 54313
Phone: 920-434-1885, Fax: 920-662-9910
Email: office@agexcavating.com



CONFIDENTIAL PROPOSAL

Proposal No:	22512
Date:	3/23/2022

Submitted to/Bill to:	
Attention:	JERRY LANCELLE
Name:	VILLAGE OF HOBART
Address:	3769 N. OVERLAND ROAD
City, State, Zip:	HOBART, WI 54155
Phone:	920-869-3807
Cell:	920-655-3719
Email:	jerry@hobart-wi.org

Work to be performed at:	
Name:	JOAN LEFFEW
Address:	1033 HEYERDAHL
City/Village/Town:	HOBART
County:	BROWN

PROPOSAL FOR THE FOLLOWING ITEMS

DITCHING

INCLUDES:

CUT IN APPROX 120' OF NEW DITCH FROM PONCE DE LEON BLVD AT REAR OF PROPERTY TO DRAIN
STORM WATER POOLING UP AT 1033 HEYERDAHL
REMOVE ALL EXCAVATED MATERIAL AND HAUL OUT
INSTALL NEW TOPSOIL, SEED AND E-MAT NEW DITCH
INSTALL EROSION CONTROL SOCK AT PONCE DE LEON DITCHLINE
MOBILIZATION

DITCHING TOTAL: \$ 4,315.00

NOTE:

**** PROPERTY OWNER RESPONSIBLE FOR WATERING OF NEW DITCH

EXCLUDES:

PREVAILING WAGE RATES
DAMAGE TO UNMARKED UNDERGROUND UTILITIES
PERMITS OTHER THAN LISTED ABOVE
BONDING OTHER THAN LISTED ABOVE
EROSION CONTROL OTHER THAN LISTED ABOVE
LANDSCAPING, SEEDING, FERTILIZING, OR MULCHING OTHER THAN LISTED ABOVE
CONSTRUCTION AND OR UTILITY STAKING
ADDITIONAL COSTS DUE TO WINTER CONDITIONS
SOIL / COMPACTION TESTING
GRANULAR / GRAVEL BACKFILL OTHER THAN LISTED ABOVE
RIP RAP OR FABRIC OTHER THAN LISTED ABOVE
TRAFFIC CONTROL OTHER THAN LISTED ABOVE
ASBESTOS TESTING AND / OR REMOVAL
CONTAMINATED SOIL REMOVAL OTHER THAN LISTED ABOVE
ANY VAPOR BARRIER OTHER THAN LISTED ABOVE
FOUNDATION INSULATION
ANY PAVEMENT REPAIR, OR REPLACEMENT, OTHER THAN LISTED ABOVE
ANY POND LINER OTHER THAN LISTED ABOVE
ANY FABRIC BARRIER OTHER THAN LISTED ABOVE

PLEASE CALL WITH QUESTIONS, THANK-YOU FOR THE OPPORTUNITY TO QUOTE THIS PROJECT.

--AL GOSSEN, 920-371-0683

Notes: Additional frost charge, when applicable, at T & M rates. Removal & replacement of any unsuitable soil below sub grade will be an extra charge at T&M rates. Excavation based on there being 1ft. of existing black dirt.

Terms: 30 days from invoice date. Service charges on amounts past due. Computed at 1.5% per month, (18% per year)

Owner is responsible for removing existing obstacles or debris in working area. There will be an additional charge of time, material and equipment if we hit bedrock, boulders, any unknown obstacle, unsuitable, or contaminated soil (Tested by others). Above work to be performed in accordance with the drawings and specifications submitted for the above work. Any alteration or deviation from above specifications involving extra costs, will become an extra charge over & above this estimate. All agreements contingent on accidents or delays are beyond our control. This proposal may be revoked if not accepted within 15 days.

We reserve the right to recall this estimate within 5 business days, in the event of error.

We require a minimum lead time of 4 business days in order to locate underground utilities.

Acceptance of Proposal (must be signed/dated & returned before work can begin.)

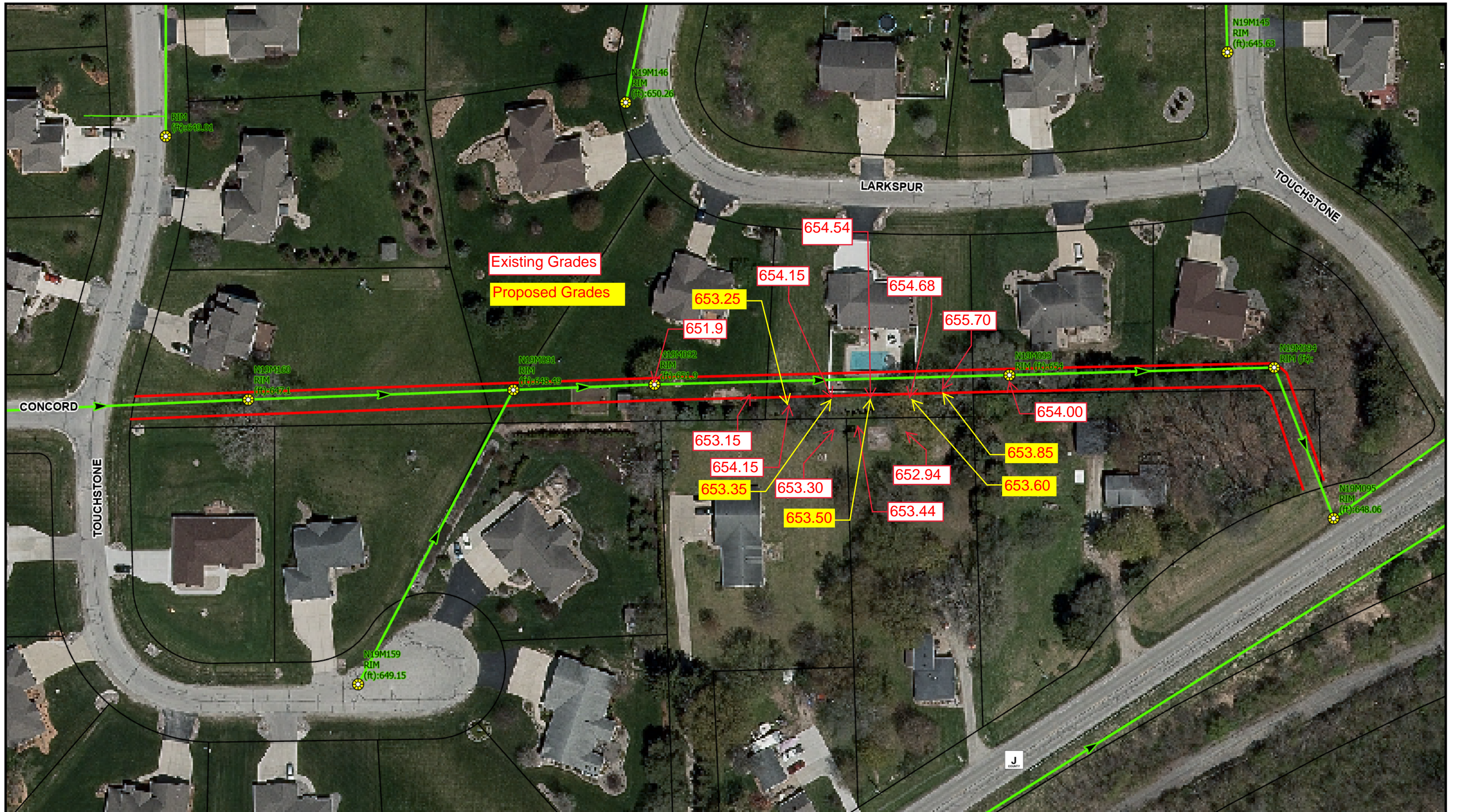
The above is satisfactory and is hereby accepted.

Signature: _____ Date: _____

LIEN RIGHTS

AS REQUIRED BY THE WISCONSIN CONSTRUCTION LIEN LAW, BUILDER HEREBY NOTIFIES OWNER THAT PERSONS OF COMPANIES FURNISHING LABOR OR MATERIAL FOR THE CONSTRUCTION ON OWNER'S LAND MAY HAVE LIEN RIGHTS ON OWNER'S LAND AND BUILDING IF NOT PAID. THOSE ENTITLED TO LIEN RIGHTS, IN ADDITION TO A G EXCAVATING INC., ARE THOSE WHO CONTRACT DIRECTLY WITH THE OWNER OR THOSE WHO GIVE THE OWNER NOTICE WITHIN 60 DAYS AFTER THEY FIRST FURNISH LABOR OR MATERIALS FOR THE CONSTRUCTION. ACCORDINGLY, OWNER PROBABLY WILL RECEIVE NOTICES FROM THOSE WHO FURNISH LABOR OR MATERIALS FOR THE CONSTRUCTION, AND SHOULD GIVE A COPY OF EACH NOTICE RECEIVED TO HIS MORTGAGE LENDER, IF ANY, TO SEE THAT ALL POTENTIAL LIEN CLAIMANTS ARE DULY PAID.

Proposal No: 22512

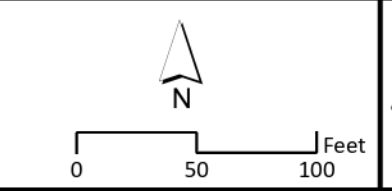


Existing Grades
Proposed Grades

Sanitary System Map
Larkspur Lane and Riverdale Dr Area
Village of Hobart
Brown County, WI

DATE: 3/4/2022
JOB: XXXXXX
DRAWN: ARP

- Flow Direction
- Sanitary Gravity Main
- Sanitary Lateral
- Sanitary Manhole
- 20' Easement
- Parcels



Source: Robert E. Lee & Associates, Inc.
Brown County 2020 Ortho

Disclaimer: Robert E. Lee & Associates, Inc. makes every effort to ensure this map is free of errors but does not warrant the map or its features are either spatially or temporally accurate or fit for a particular use. Robert E. Lee & Associates, Inc., provides this map without any warranty of any kind whatsoever, either expressed or implied.



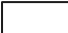
REL Robert E. Lee & Associates, Inc.

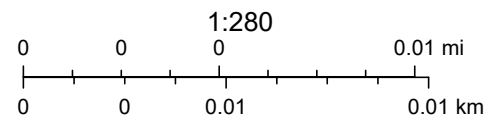
1250 Centennial Centre Boulevard | Hobart, Wisconsin 54155
920-662-9641 | info@releeinc.com | releeinc.com

Utilities Combined

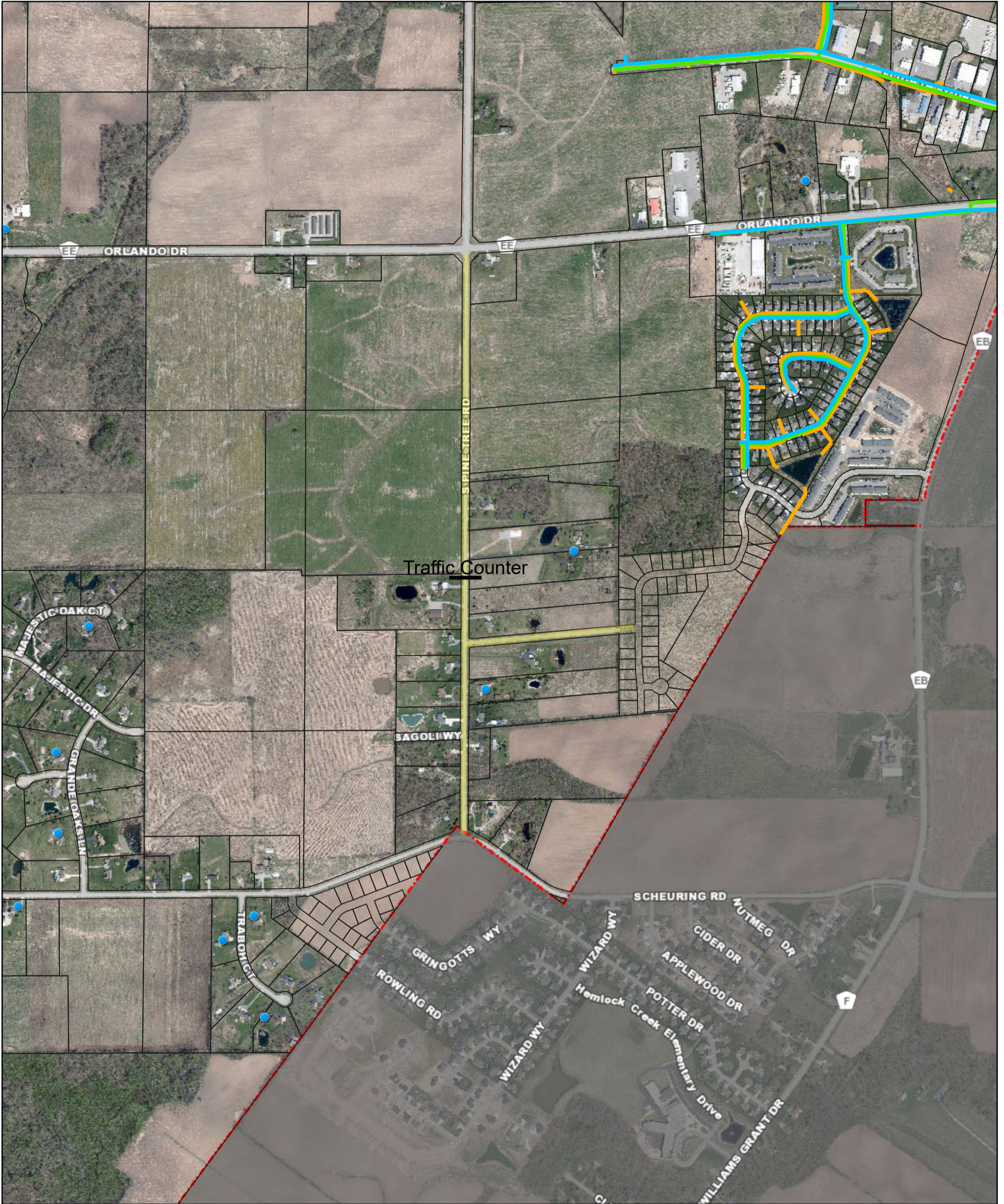


5/5/2022, 7:19:36 AM

-  Water Hydrants
-  Water Lateral Lines
-  Parcels

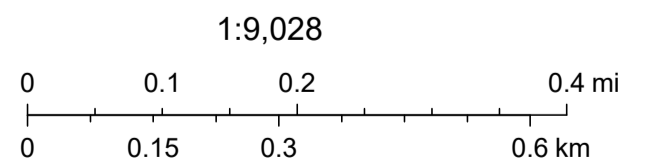


Utilities Combined



5/4/2022, 1:29:20 PM

- Water Wells 2006
- Water Mains
- Sewer Gravity Mains
- Storm Gravity Mains
- Addresses
- Parcels



2022 Speed Statistics by Hour

SpeedStatHour-22

Site: S. Pinetree Rd.2.3NS
Description: 100' North of Intersection
Filter time: 12:17 Tuesday, April 12, 2022 => 8:39 Friday, April 22, 2022
Scheme: Vehicle classification (Scheme F3)
Filter: Cls(1-13) Dir(NESW) Sp(6,99) Headway(>0) Span(0 - 328.084) Lane(0-16)

Vehicles = 10227

Posted speed limit = 45 mph, Exceeding = 3201 (31.30%), Mean Exceeding = 49.42 mph

Maximum = 80.1 mph, Minimum = 8.6 mph, Mean = 39.3 mph

85% Speed = 48.65 mph, 95% Speed = 50.44 mph, Median = 41.16 mph

12 mph Pace = 39 - 51, Number in Pace = 5600 (54.76%)

Variance = 90.36, Standard Deviation = 9.51 mph

Hour Bins (Partial days)

Time	Bin	Min	Max	Mean	Median	85%	95%	>PSL 45 mph
0000	52 0.508%	19.3	50.2	39.5	44.7	50.2	50.2	19 36.54%
0100	21 0.205%	23.7	50.2	38.4	42.2	48.4	50.0	9 42.86%
0200	18 0.176%	21.8	48.1	37.2	38.7	45.2	48.1	2 11.11%
0300	22 0.215%	21.8	50.2	35.8	33.1	48.4	50.2	5 22.73%
0400	114 1.115%	21.8	67.4	38.8	38.7	48.4	50.2	30 26.32%
0500	255 2.493%	21.8	54.3	39.4	42.2	48.4	54.2	62 24.31%
0600	503 4.918%	21.8	77.7	41.3	42.2	50.4	54.2	176 34.99%
0700	900 8.800%	21.8	80.1	41.3	42.2	50.4	55.0	322 35.78%
0800	678 6.630%	21.8	56.1	40.1	38.7	50.2	56.1	252 37.17%
0900	428 4.185%	10.9	56.1	38.2	37.5	50.2	56.1	128 29.91%
1000	445 4.351%	8.6	56.1	36.1	36.2	45.2	50.4	74 16.63%
1100	531 5.192%	23.7	56.5	37.3	39.4	45.2	50.4	85 16.01%
1200	565 5.525%	23.7	55.7	38.8	41.3	48.0	50.4	120 21.24%
1300	534 5.221%	10.5	57.9	38.7	41.6	48.0	50.4	159 29.78%
1400	588 5.749%	23.7	53.5	38.4	40.4	46.6	50.4	175 29.76%
1500	1048 10.25%	14.4	56.7	40.0	41.6	48.1	50.4	378 36.07%
1600	1163 11.37%	14.2	60.6	40.1	43.3	50.2	54.5	454 39.04%
1700	784 7.666%	20.8	62.9	38.4	38.7	48.1	50.2	256 32.65%
1800	540 5.280%	12.7	51.8	39.2	40.2	48.7	50.2	172 31.85%
1900	391 3.823%	21.8	55.3	39.0	41.2	48.4	50.2	119 30.43%
2000	265 2.591%	21.8	50.2	40.0	42.2	48.4	50.2	91 34.34%
2100	202 1.975%	21.8	50.2	38.5	41.2	48.4	50.2	65 32.18%
2200	114 1.115%	21.8	50.2	38.5	40.2	48.4	50.2	30 26.32%
2300	66 0.645%	21.8	50.2	35.8	33.8	50.1	50.2	18 27.27%
----	10227 100.0%	8.6	80.1	39.3	41.2	48.7	50.4	3201 31.30%

2022 Weekly Vehicle Counts (Virtual Week)

VirtWeeklyVehicle-23

Site: S. Pinetree Rd.2.3NS
Description: 100' North of Intersection
Filter time: 12:17 Tuesday, April 12, 2022 => 8:39 Friday, April 22, 2022
Scheme: Vehicle classification (Scheme F3)
Filter: Cls(1-13) Dir(NESW) Sp(6,99) Headway(>0) Span(0 - 328.084) Lane(0-16)

Hour	Mon	Tue	Wed	Thu	Fri	Sat	Sun	Averages		
								1 - 5	1 - 7	
0000-0100	0.0	5.0	3.0	4.0	8.0	11.0	6.0	4.4	5.2	
0100-0200	0.0	4.0	1.0	0.0	1.0	11.0	2.0	1.0	2.1	
0200-0300	5.0	3.0	2.0	2.0	0.0	0.0	2.0	2.0	1.8	
0300-0400	0.0	2.0	2.0	2.0	2.0	4.0	4.0	1.8	2.2	
0400-0500	15.0	17.0	12.0	13.5	11.5	6.0	2.0	13.3	11.4	
0500-0600	42.0	32.0	29.5	30.0	22.5	15.0	2.0	29.8	25.5	
0600-0700	60.0	60.0	58.0	64.5	60.5	5.0	12.0	60.8	50.3	
0700-0800	109.0	101.0	111.5	116.0	89.5	38.0	18.0	105.5	90.0	
0800-0900	88.0	95.0	96.0	88.0	28.0	43.0	28.0	75.9	67.8	
0900-1000	59.0	38.0	41.5	46.0	56.0	45.0	55.0	46.9	47.6	
1000-1100	37.0	43.0	41.5	47.5	48.0	64.0	75.0	43.7	49.4	
1100-1200	32.0	50.0	48.0	70.5	63.0	69.0	80.0	54.6	59.0	
1200-1300	41.0	22.0	62.5	80.0	75.0	64.0	56.0	55.6	56.5	
1300-1400	58.0	31.0	63.5	52.0	56.0	66.0	61.0	50.9	53.4	
1400-1500	41.0	62.5	63.0	65.0	67.0	53.0	46.0	61.1	58.8	
1500-1600	148.0	121.0	121.5	111.0	89.0	46.0	58.0	118.0	104.8	
1600-1700	130.0	135.5	128.5	157.5	85.0	28.0	77.0	132.3	116.3	
1700-1800	90.0	81.0	90.5	97.0	53.0	33.0	71.0	85.0	78.4	
1800-1900	53.0	44.5	58.5	56.5	60.0	42.0	66.0	54.0	54.0	
1900-2000	37.0	45.5	28.5	42.5	46.0	35.0	40.0	39.5	39.1	
2000-2100	23.0	23.0	28.0	33.5	28.0	21.0	24.0	27.5	26.5	
2100-2200	28.0	13.5	16.0	17.0	30.0	37.0	14.0	18.9	20.2	
2200-2300	12.0	11.5	8.0	13.0	14.0	11.0	12.0	11.4	11.4	
2300-2400	0.0	5.0	2.5	9.5	14.0	18.0	0.0	6.0	6.6	
Totals										
0700-1900	886.0	824.5	926.5	987.0	769.5	591.0	691.0	883.4	836.0	
0600-2200	1034.0	966.5	1057.0	1144.5	934.0	689.0	781.0	1030.0	972.1	
0600-0000	1046.0	983.0	1067.5	1167.0	962.0	718.0	793.0	1047.4	990.1	
0000-0000	1108.0	1046.0	1117.0	1218.5	1007.0	765.0	811.0	1099.5	1038.3	
AM Peak	0700	0700	0700	0700	0700	1100	1100			
	109.0	101.0	111.5	116.0	89.5	69.0	80.0			
PM Peak	1500	1600	1600	1600	1500	1300	1600			
	148.0	135.5	128.5	157.5	89.0	66.0	77.0			

* - No data.

2021 Speed Statistics by Hour

SpeedStatHour-25

Site: S. Pinetree Rd..2.3SN
Description: 100' south of intersection
Filter time: 8:03 Thursday, April 1, 2021 => 8:22 Thursday, April 8, 2021
Scheme: Vehicle classification (Scheme F3)
Filter: Cls(1-13) Dir(NESW) Sp(6,99) Headway(>0) Span(0 - 328.084) Lane(0-16)

Vehicles = 3422

Posted speed limit = 45 mph, Exceeding = 2115 (61.81%), Mean Exceeding = 49.92 mph

Maximum = 85.9 mph, Minimum = 9.5 mph, Mean = 45.8 mph

85% Speed = 51.73 mph, 95% Speed = 55.46 mph, Median = 46.75 mph

12 mph Pace = 40 - 52, Number in Pace = 2466 (72.06%)

Variance = 51.91, Standard Deviation = 7.20 mph

Hour Bins (Partial days)

Time	Bin	Min	Max	Mean	Median	85%	95%	>PSL 45 mph
0000	21 0.614%	40.5	51.2	46.4	46.5	50.2	51.1	15 71.43%
0100	3 0.088%	41.0	46.6	43.0	41.4	46.6	46.6	1 33.33%
0200	3 0.088%	51.7	55.0	52.8	51.9	55.0	55.0	3 100.0%
0300	8 0.234%	39.6	52.0	46.4	46.9	51.8	52.0	5 62.50%
0400	34 0.994%	34.2	60.7	46.9	45.9	51.9	57.2	20 58.82%
0500	70 2.046%	32.5	61.5	47.3	48.2	52.8	56.0	48 68.57%
0600	168 4.909%	35.1	61.2	44.6	45.4	49.5	51.8	93 55.36%
0700	219 6.400%	18.8	62.3	46.8	47.3	51.4	54.9	154 70.32%
0800	234 6.838%	16.9	63.2	45.8	45.5	53.6	56.1	119 50.85%
0900	113 3.302%	21.6	59.6	45.8	46.6	50.9	54.9	65 57.52%
1000	138 4.033%	16.8	60.8	47.1	46.9	52.1	57.1	91 65.94%
1100	186 5.435%	15.3	69.5	46.2	47.7	51.8	57.0	124 66.67%
1200	205 5.991%	12.2	58.5	43.2	45.4	50.3	53.6	110 53.66%
1300	202 5.903%	11.0	61.5	45.0	46.8	51.9	54.9	118 58.42%
1400	226 6.604%	12.3	85.9	47.1	47.7	54.9	62.0	161 71.24%
1500	396 11.57%	11.8	67.8	47.2	47.8	51.9	55.4	281 70.96%
1600	387 11.31%	9.5	65.9	45.2	47.0	51.7	55.1	250 64.60%
1700	291 8.504%	10.5	65.2	44.5	45.2	51.3	54.8	154 52.92%
1800	233 6.809%	12.1	64.1	46.0	46.8	52.1	55.0	137 58.80%
1900	128 3.741%	22.7	60.4	45.2	45.5	52.0	56.3	66 51.56%
2000	70 2.046%	35.8	56.3	45.4	45.4	51.7	53.9	36 51.43%
2100	39 1.140%	35.8	58.7	47.6	47.8	52.8	55.4	30 76.92%
2200	29 0.847%	38.5	59.1	47.4	47.6	50.9	57.5	23 79.31%
2300	19 0.555%	38.1	53.4	45.6	45.6	52.5	53.4	11 57.89%
----	3422 100.0%	9.5	85.9	45.8	46.8	51.7	55.5	2115 61.81%

2021 Weekly Vehicle Counts (Virtual Week)

VirtWeeklyVehicle-24

Site: S. Pinetree Rd..2.3SN
Description: 100' south of intersection
Filter time: 8:03 Thursday, April 1, 2021 => 8:22 Thursday, April 8, 2021
Scheme: Vehicle classification (Scheme F3)
Filter: Cls(1-13) Dir(NESW) Sp(6,99) Headway(>0) Span(0 - 328.084) Lane(0-16)

Hour	Mon	Tue	Wed	Thu	Fri	Sat	Sun	Averages		
								1 - 5	1 - 7	
0000-0100	3.0	6.0	5.0	3.0	0.0	3.0	1.0	3.4	3.0	
0100-0200	1.0	0.0	2.0	0.0	0.0	0.0	0.0	0.6	0.4	
0200-0300	0.0	1.0	1.0	0.0	1.0	0.0	0.0	0.6	0.4	
0300-0400	1.0	1.0	2.0	0.0	1.0	3.0	0.0	1.0	1.1	
0400-0500	3.0	6.0	7.0	8.0	3.0	5.0	2.0	5.4	4.9	
0500-0600	14.0	8.0	22.0	18.0	7.0	1.0	0.0	13.8	10.0	
0600-0700	31.0	29.0	40.0	48.0	11.0	6.0	3.0	31.8	24.0	
0700-0800	48.0	44.0	64.0	25.0	26.0	8.0	4.0	41.4	31.3	
0800-0900	40.0	65.0	77.0	0.0	13.0	32.0	7.0	32.5	29.3	
0900-1000	11.0	30.0	21.0	0.0	8.0	23.0	20.0	14.0	16.1	
1000-1100	16.0	29.0	28.0	0.0	13.0	22.0	30.0	17.2	19.7	
1100-1200	27.0	31.0	34.0	5.0	44.0	21.0	24.0	28.2	26.6	
1200-1300	36.0	39.0	24.0	29.0	32.0	22.0	23.0	32.0	29.3	
1300-1400	32.0	32.0	34.0	37.0	24.0	31.0	12.0	31.8	28.9	
1400-1500	34.0	40.0	33.0	20.0	38.0	28.0	33.0	33.0	32.3	
1500-1600	67.0	92.0	90.0	42.0	47.0	22.0	36.0	67.6	56.6	
1600-1700	69.0	83.0	68.0	56.0	54.0	25.0	32.0	66.0	55.3	
1700-1800	49.0	61.0	69.0	40.0	39.0	22.0	11.0	51.6	41.6	
1800-1900	44.0	48.0	32.0	29.0	28.0	24.0	28.0	36.2	33.3	
1900-2000	29.0	19.0	25.0	9.0	14.0	16.0	16.0	19.2	18.3	
2000-2100	11.0	13.0	16.0	9.0	7.0	9.0	5.0	11.2	10.0	
2100-2200	3.0	6.0	6.0	4.0	4.0	11.0	5.0	4.6	5.6	
2200-2300	7.0	9.0	6.0	1.0	2.0	1.0	3.0	5.0	4.1	
2300-2400	3.0	10.0	0.0	0.0	2.0	4.0	0.0	3.0	2.7	
Totals										
0700-1900	473.0	594.0	574.0	283.0	366.0	280.0	260.0	451.5	400.1	
0600-2200	547.0	661.0	661.0	353.0	402.0	322.0	289.0	518.3	458.0	
0600-0000	557.0	680.0	667.0	354.0	406.0	327.0	292.0	526.3	464.8	
0000-0000	579.0	702.0	706.0	383.0	418.0	339.0	295.0	551.1	484.7	
AM Peak	0700	0800	0800	0600	1100	0800	1000			
	48.0	65.0	77.0	48.0	44.0	32.0	30.0			
PM Peak	1600	1500	1500	1600	1600	1300	1500			
	69.0	92.0	90.0	56.0	54.0	31.0	36.0			

* - No data.

Proposed Conversion of FD 1991 Tender to dumping flat bed for DPW

Truck Equipment currently has a 14' flat bed with electric hoist in stock from a cancelled order. Public Work crewmembers proposed the idea of converting the 1991 Fire Department Tender into a brining and debris hauling unit.

This proposal would provide more flexibility and improved brining capabilities for the Village, brining is being advocated for snow and ice removal to reduce overall salt usage. The primary downfall is another vehicle to maintain and store within the Public Works.

I have run this proposal by with the mechanic that serviced the Tender for the last ten years, his thoughts are the unit would be stable enough for this low speed/use work with regular maintenance issue.

1991 Chevrolet "Kodiak" Medium Duty Truck

- 19,450 Miles
- Cat 3116 Diesel / 170Hp
- Allison Transmission
- Good Tires
- Corrosion on rear frame members, part of package to repair and reinforce for dump bed
- Tank is rusted through, scrap metal value
- Geared low, good for low-speed operations
- Flat bed could be repurposed to new vehicle in future

Value of current Chevrolet

- Hard to determine based on FD use
- Prices on 1991 chassis range from \$4700 to \$8,000
- Located some process higher with operational dump bodies

Uses for proposed flat bed

- Hauling leaves/brush/mulch
 - Capacity would be roughly 2-3 times of 5-yard trucks currently used
 - Less trips to dispose of debris
 - Can be used for chipping, attached to chipper to collect mulch
- Brining and pre-treating roads during snow season
 - Would require tank and pump setup
 - 2,000 gallons ~\$3,000 to \$5,000
 - Would be capable of pretreating all roads with one load
 - Currently requires 3-4 trips with two pickups
 - Eliminate switching between tanks and salters
 - Reduce corrosion on pickup trucks
 - Could be used for de-icing operations
 - Reduce salt usage
 - Brining is more environmentally friendly Truck Chassis Prep Costs:

Chassis Prep Costs:

Transmission Lines \$1,400
 Undercoating \$1,200
 Lettering/Graphics \$ 450
\$3,050

Flat Bed Conversion \$20,801

Quotes:

Truck Equipment \$17,878 (In Stock) \$20,801 (Ordered)

Olsen Trailer \$19,814 (Ordered)

2021 Yard Waste Costs / Actual

	Man Hours	Cost / \$36.24	Loader Hours	Cost / \$56.76	Truck Hours	Cost / \$50.78	Fuel Costs	Loads Hauled	\$8 per Ld.	Grinding Exp.
Jan	2.5	\$90.60	0.75	\$42.57	1.75	\$88.87	\$30.32	5	\$40.00	\$4,700.00
Feb	0	\$0.00	0	\$0.00	0	\$0.00	\$0.00	0	\$0.00	
March	26.3	\$953.11	7.89	\$447.84	18.41	\$934.86	\$318.91	17	\$136.00	
April	19.5	\$706.68	5.85	\$332.05	13.65	\$693.15	\$236.46	61	\$488.00	
May	86	\$3,116.64	25.8	\$1,464.41	60.2	\$3,056.96	\$1,042.84	43	\$344.00	
June	84	\$3,044.16	25.2	\$1,430.35	58.8	\$2,985.86	\$1,018.58	46	\$368.00	
July	97	\$3,515.28	29.1	\$1,651.72	67.9	\$3,447.96	\$1,176.22	65	\$520.00	
August	72	\$2,609.28	21.6	\$1,226.02	50.4	\$2,559.31	\$873.07	84	\$672.00	
Sept	75	\$2,718.00	22.5	\$1,277.10	52.5	\$2,665.95	\$909.45	61	\$488.00	
Oct	124	\$4,493.76	37.2	\$2,111.47	86.8	\$4,407.70	\$1,503.62	107	\$856.00	
Nov	80	\$2,899.20	24	\$1,362.24	56	\$2,843.68	\$970.08	76	\$608.00	
Dec		\$0.00	0	\$0.00	0	\$0.00	\$0.00		\$0.00	
	666.3	\$24,146.71	199.89	\$11,345.76	466.41	\$23,684.30	\$8,079.55	565	\$4,520.00	\$4,700.00

Man Hours: \$24,146.71

Machine Costs: \$43,109.61

Disposal Costs: \$4,700.00

2021 Yard Waste Costs / Projected with Flat Bed

	Man Hours	Cost / \$36.24	Loader Hours	Cost / \$56.76	Truck Hours	Cost / \$50.78	Fuel Costs	Loads Hauled	\$8 per Ld.	Grinding Exp.
Jan	1.875	\$67.95	0.5625	\$31.93	0.875	\$44.43	\$16.10	2.5	\$20.00	\$4,700.00
Feb	0	\$0.00	0	\$0.00	0	\$0.00	\$0.00	0	\$0.00	
March	19.725	\$714.83	5.9175	\$335.88	9.205	\$467.43	\$169.32	8.5	\$68.00	
April	14.625	\$530.01	4.3875	\$249.03	6.825	\$346.57	\$125.54	30.5	\$244.00	
May	64.5	\$2,337.48	19.35	\$1,098.31	30.1	\$1,528.48	\$553.67	21.5	\$172.00	
June	63	\$2,283.12	18.9	\$1,072.76	29.4	\$1,492.93	\$540.79	23	\$184.00	
July	72.75	\$2,636.46	21.825	\$1,238.79	33.95	\$1,723.98	\$624.49	32.5	\$260.00	
August	54	\$1,956.96	16.2	\$919.51	25.2	\$1,279.66	\$463.54	42	\$336.00	
Sept	56.25	\$2,038.50	16.875	\$957.83	26.25	\$1,332.98	\$482.85	30.5	\$244.00	
Oct	93	\$3,370.32	27.9	\$1,583.60	43.4	\$2,203.85	\$798.31	53.5	\$428.00	
Nov	60	\$2,174.40	18	\$1,021.68	28	\$1,421.84	\$515.04	38	\$304.00	
Dec	0	\$0.00	0	\$0.00	0	\$0.00	\$0.00	0	\$0.00	
	499.73	\$18,110.03	149.92	\$8,509.32	233.21	\$11,842.15	\$4,289.64	282.50	\$2,260.00	\$4,700.00

Man Hours: \$18,110.03

Machine Costs: \$24,641.11

Disposal Costs: \$4,700.00

Actual	666.30	\$24,146.71	199.89	\$11,345.76	466.41	\$23,684.30	\$8,079.55	565.00	\$4,520.00	\$4,700.00
Projected	499.73	\$18,110.03	149.92	\$8,509.32	233.21	\$11,842.15	\$4,289.64	282.50	\$2,260.00	\$4,700.00
Difference	166.58	\$6,036.68	49.97	\$2,836.44	233.21	\$11,842.15	\$3,789.91	282.50	\$2,260.00	\$0.00