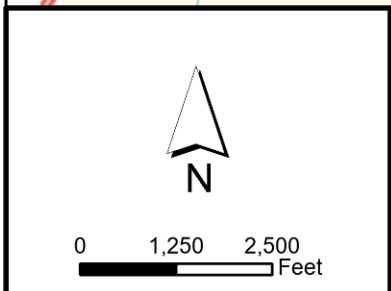
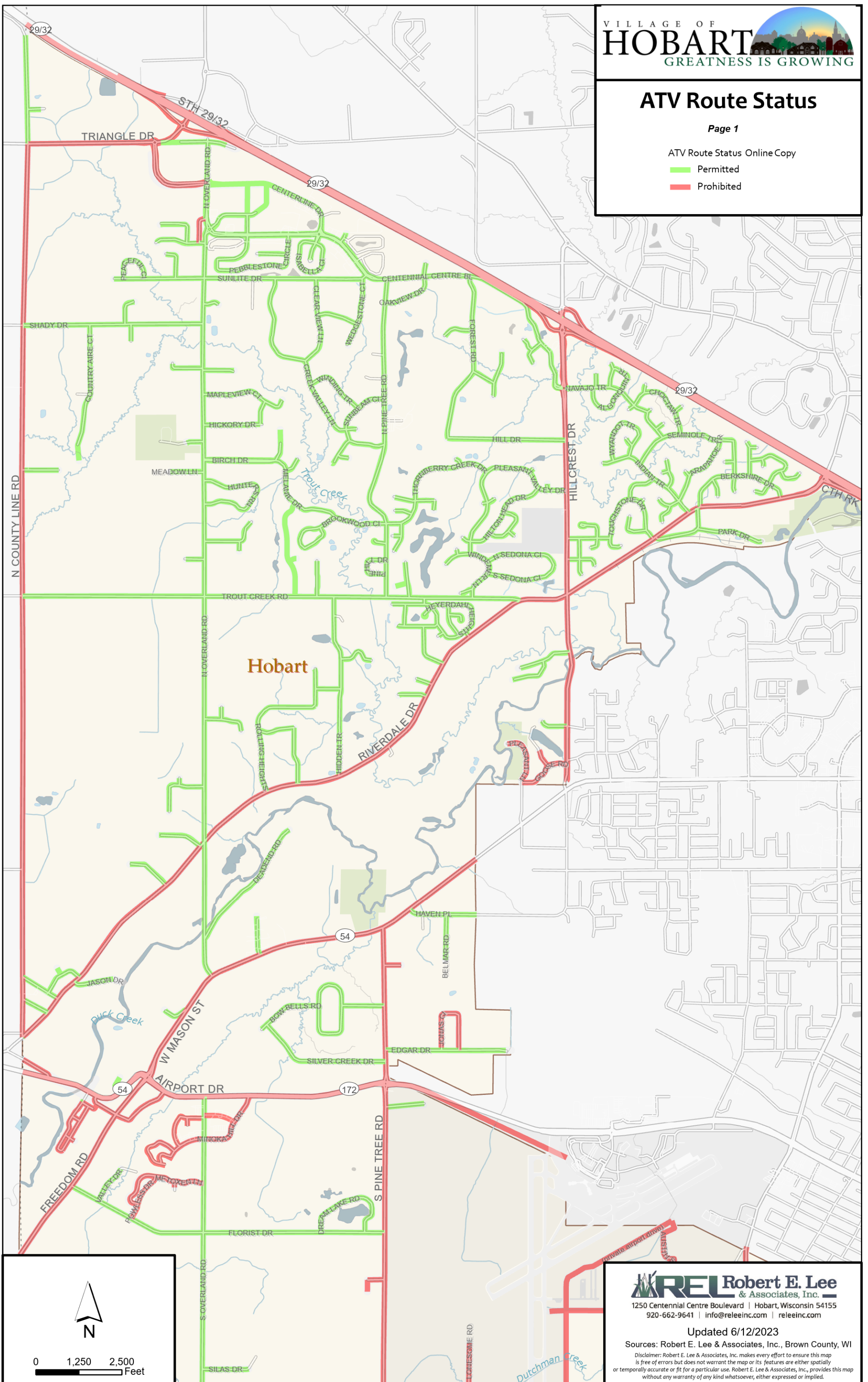


## ATV Route Status

Page 1

ATV Route Status Online Copy

- █ Permitted
- █ Prohibited

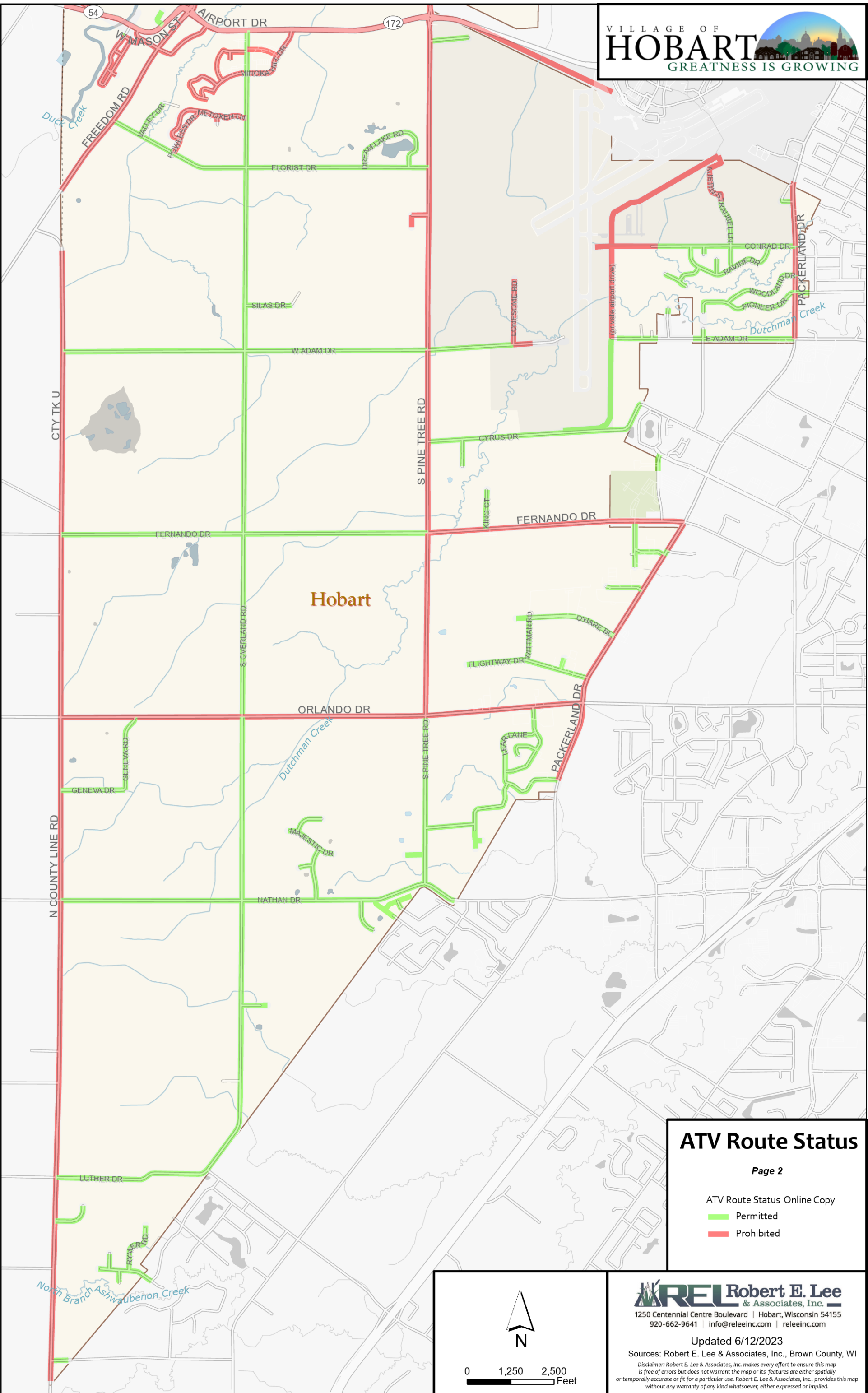


**REL Robert E. Lee & Associates, Inc.**  
 1250 Centennial Centre Boulevard | Hobart, Wisconsin 54155  
 920-662-9641 | info@releinc.com | releinc.com

Updated 6/12/2023

Sources: Robert E. Lee & Associates, Inc., Brown County, WI

Disclaimer: Robert E. Lee & Associates, Inc. makes every effort to ensure this map is free of errors but does not warrant the map or its features are either spatially or temporally accurate or fit for a particular use. Robert E. Lee & Associates, Inc., provides this map without any warranty of any kind whatsoever, either expressed or implied.

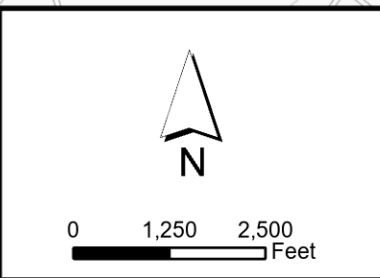


### ATV Route Status

Page 2

ATV Route Status Online Copy

- █ Permitted
- █ Prohibited



**REL Robert E. Lee & Associates, Inc.**  
 1250 Centennial Centre Boulevard | Hobart, Wisconsin 54155  
 920-662-9641 | info@releinc.com | releinc.com

Updated 6/12/2023

Sources: Robert E. Lee & Associates, Inc., Brown County, WI

Disclaimer: Robert E. Lee & Associates, Inc. makes every effort to ensure this map is free of errors but does not warrant the map or its features are either spatially or temporally accurate or fit for a particular use. Robert E. Lee & Associates, Inc., provides this map without any warranty of any kind whatsoever, either expressed or implied.